



Dimensions of the print data


Please create the printing file according to your format selection on the product page.

The vinyl sticker will be produced in several parts from a certain width. This will be shown in advance on the product page. This will be shown beforehand on the product page. If you want the sticker to be divided at a preferred section, please create individual segments with 0.2" overlap at the sides and add additional 0.12" bleed to all sides. Otherwise, we will divide the motif at optimal separation.

Example sticker



Summary

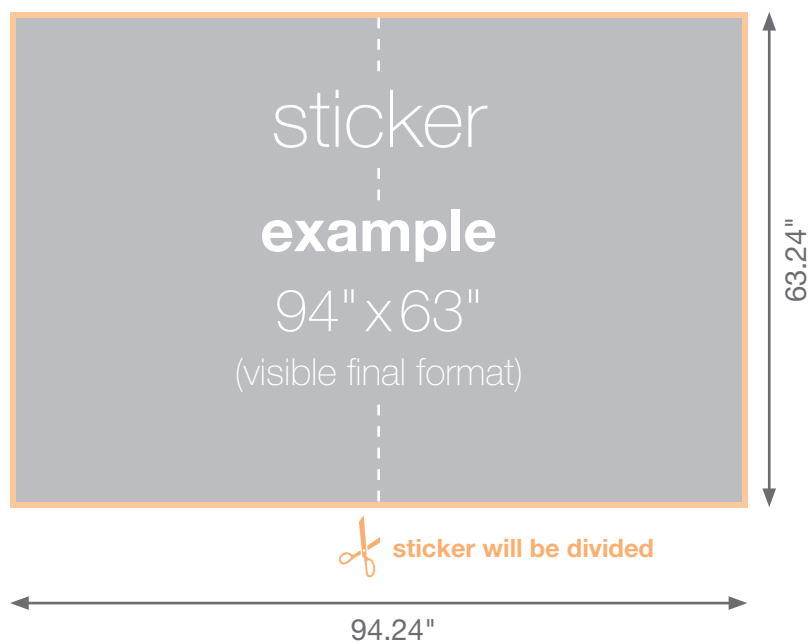
 File format incl. 0.12" bleed
Example: 43.24" x 27.24"

 Visible final format
Example: 43" x 27"

Important

Create the data **without** trim and crop marks. Further information can be found on [page 5](#). Information for die cut stickers can be found on [page 2](#). Please note the individual specification on [page 3](#) for the following stickers: shop window stickers, perforated window foil, floor stickers, backlit and wall decals.

Example for sticker exceeding a size of 47"



Examples and recommendation

File format to be created

Create your ordered print size (see product page) incl. bleed of 0.12" on all sides.

Exceeding a size of 47"

If one side of your vinyl sticker exceeds 47", the foil will be cut and produced in several pieces.

Our recommendation

We recommend a safety distance of at least 0.12" for text, logos or others important elements, because we cannot provide a 100% guarantee for the accuracy for the cut.



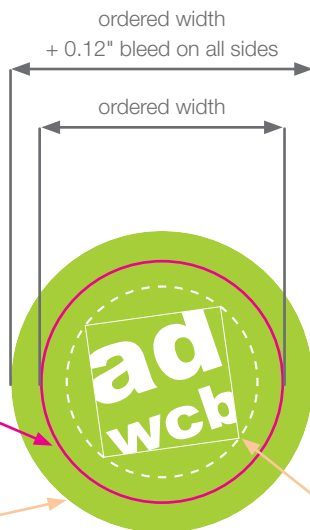
Die cut stickers

Please create your printing file for die cut stickers with the following specifications. The cutting path must be defined as spot color, otherwise the plotter will not recognize it and print it. Please use only one spot color for die cut in your printing file, naming it **"Cut"**. All other colors have to be created in CMYK.

cutting path

- has to be a closed vector path (contour, middle alignment)
- 100% magenta spot color named **"Cut"**
- Don't layer cutting paths
- Your sticker will be cut along the cutting path set to spot color

printing file



finished product





bleed 0.12"

To prevent white gaps appearing after cutting, please add 0.12" bleed to all sides in your printing file.


recommended safety distance of 0.2"

We cannot guarantee 100% accuracy of the cutting process so we recommend a safety distance of 0.12". Please don't place logos or other important elements in this area.

Summary

-  File format incl. 0.12" bleed
Example: 5.24" x 5.24"
-  Visible final format
Example: 5" x 5"

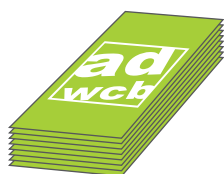
Important

-  The spot color must be named **"Cut"** to guarantee a uninterrupted production process. For stickers with die cut we can only process **PDF documents scaled 1:1**.

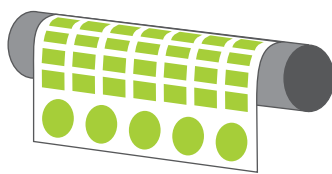


Additional costs for kiss cut or die cut

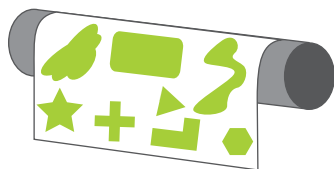
Cut costs may be additional for a certain amount and refer to all rectangular, square and round stickers that are punched on roll / sheet for production. The costs can be invoiced at a high quantity of stickers, which will be cut to the final format directly.



example



Additional costs may be invoiced above a certain quantity and include all forms that are not round or rectangular and require die cut.



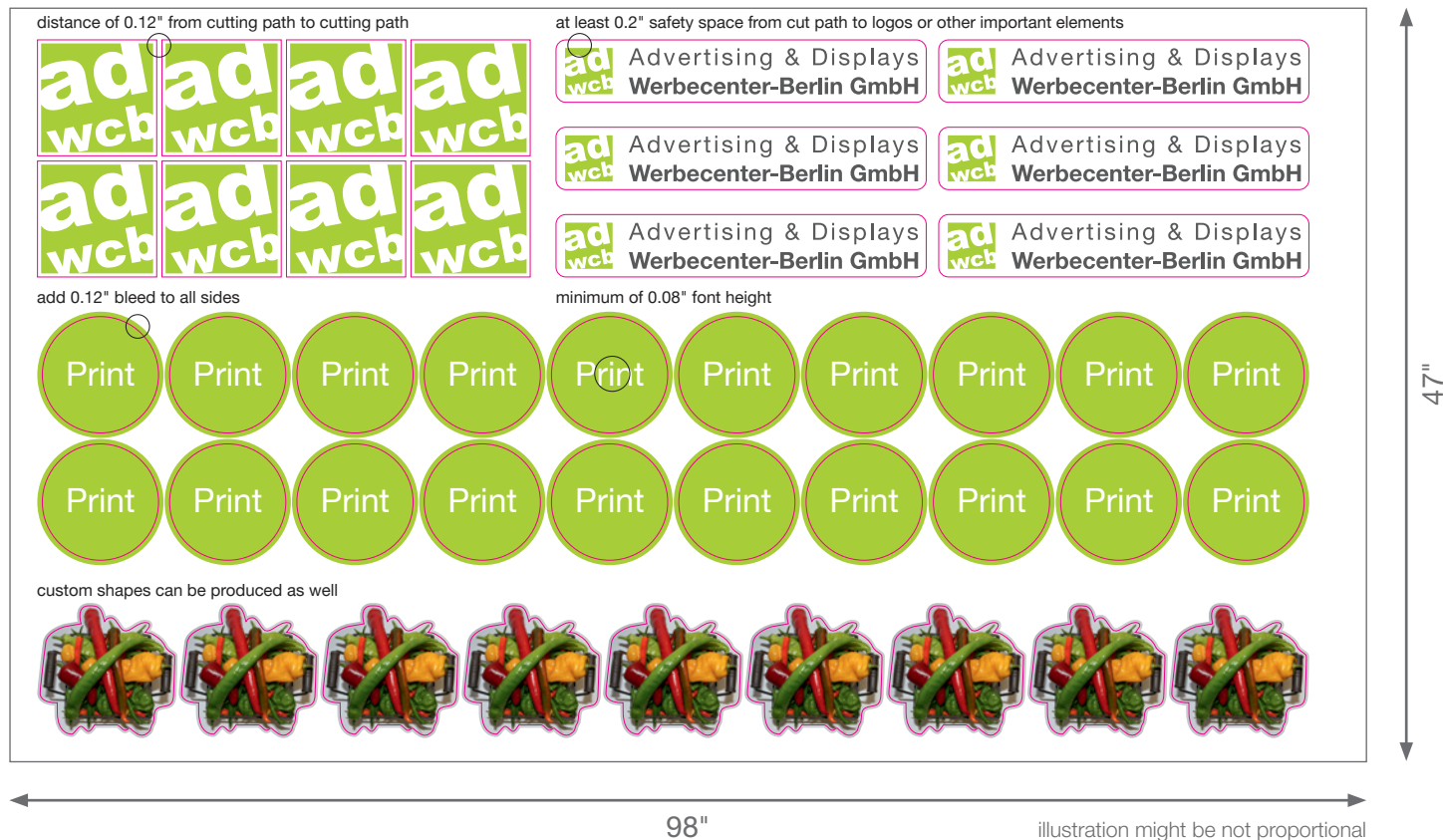
example die cut



Sheet creation

If you have more than one motif, you can create a print sheet (see example). We recommend to not exceed the maximum printing size of 47" x 98". The short side can't be longer than 47".

Example of a print sheet



Please note – special types of stickers

Shop window sticker

Please do not mirror the print motif in advance. For production reasons, we will flick your motif for application from the inside.

Perforated window foil

Your motif will be printed on a perforated foil (hole diameter: 0.06"), so we recommend the following stroke thicknesses:

Thickness for text strokes and lines: 0.16", overall height for fonts: 0.6"

To improve readability, we also recommend to use high-contrast colors.

Floor stickers

On inquiry and after checking the printing files, die cut may be possible.

Backlit

If the foil will be inserted into a light box, please add additional bleed of 0.2" to the existing bleed making it a total of 0.32" to avoid white edges. Note for the installation: We recommend to always apply the backlit film by using a pressure roller, otherwise it may result in streaking in the lamination.

Wall tattoo

1. Before using the product, unwrap it and let it lay flat. The material must relax for at least 90 minutes to reach room temperature.
2. Do not apply the material on damp or cold surfaces, close to heaters, other sources of heat or open fire. Do not expose to direct sunlight.
3. Apply to freshly painted walls at the earliest after 7 days.
4. For best results stick only to flat, smooth and dry walls without any structure.
5. Use a soft and dry cloth to remove dirt and dust from the surface on which the wall tattoo will be attached. If a damp cloth is needed to remove stubborn dirt, the wall should left to dry for 24 hours.
6. Remove trapped air bubbles from center to the outside. The edges should be smoothed by applying firm pressure on them.
7. Solvents left in the ink negatively affect the adhesive qualities, especially at the edges. Therefore, it is advisable to leave a narrow, unprinted frame.
8. It is recommended to reposition the decorations after six months at least, because the wall tattoo is protecting the wall from UV-radiation so the covered part will fade out more slowly than the rest of the the surrounding area.
9. When removing the wall tattoo for repositioning or storage, peel off the foil as slowly as possible.



File settings

Format:	final format or scaled (e.g. 1:2)
Resolution:	ratio 1:1 96-150 dpi
	ratio 1:2 192-300 dpi
	ratio 1:10 960-1500 dpi
Bleed:	no
Crop marks:	no
Overprint:	deactivated
Fonts:	embedded or converted to paths
Do not use:	clipping paths, alpha channels, masks in TIFF / JPG



File formats

Please use:
- From PDF X-3*

*important notice

Printing files can be created in a variety of different programs with different attributes. This way, numerous errors may occur: for instance missing or incorrect fonts, color anomalies, missing images etc. To avoid this **please create your data as a print-ready PDF / X-3:2002.**



Colors

Color mode: CMYK
Color profile: U.S. Web Coated (SWOP) V2,
ISO Coated v2, Coated Fogra 27 / 39

Do not use:
RGB and spot colors such as Pantone, HKS and RAL as they will be converted to CMYK. We cannot guarantee color accuracy for converted colors.

File upload



Upload to our server

www.werbecenter-onlineshop.de

Please sign up for an online account and upload the files for the ordered product to your latest order.



Notes

- Print and production tolerance will be 0,25%
- We can't guarantee measurements exact to 0.-inch
- Depending on color profile, file format and print material, colors may vary